

Bush walks

Old Kinchega Homestead; Ruins and Billabong walks



nationalparks.nsw.gov.au

Kinchega National Park has two interpreted walks departing from the Old Kinchega Homestead on the Homestead Bend in the southern section of the River Drive.

Both walks provide insight into the surrounding country and how people lived here in the past.



THE OLD KINCHEGA HOMESTEAD RUINS WALK



This short walk leads you around the ruins of the Homestead complex. Start at the boardwalk to view the ruins of the Homestead, a store and the gardens. The walk then loops back to the car park via the edge of the billabong and the sites of outbuildings that were associated with the Homestead.

As you take this walk try and imagine life here in the early 1900s when there was no power, air conditioning or refrigeration and wood stoves were used for cooking and heating water.

THE OLD KINCHEGA HOMESTEAD BILLABONG WALK

This walk starts at the foot of the elevated boardwalk. It follows the edge of the Homestead Billabong down to the Darling River and loops back to the Homestead and car park. Alternatively you can join this walk at Campsite 34 on the River Drive.

It is classed as a grade 3 track and is suitable for most ages and fitness levels. Some bushwalking experience is recommended. The track has some short steep sections, some rough and uneven

footing and is slippery when wet. Due to the walking track crossing the path of the billabong it may be closed when water levels are high.

Along the length of this track you can learn more about Kinchega's plants and animals as well as see Aboriginal occupation sites. Whilst visiting these sites imagine the land and the life that existed here in harmony for thousands of years. You will also come across relics from Kinchega's life as a pastoral station including the Kinchega cemetery.



As you walk remember to look up and around you to take in all the walk has to offer. Why not count "homes" for the animals as you go? Look for hollows in the trees, fallen timber, areas of dense leaf litter, a thick shrub, a large crack in the clay or a burrow in the sand.

Can you figure out who has passed this way before you? Look for tracks in the natural surface, especially after rain. Was it an emu, a galah or even a snake?



Images:
Top: Wandering along the Billabong walk (D. Haskard, OEH)
Left: Brick of the old Kinchega Homestead ruins (J. Doyle, OEH)
Middle: Elevated walk around the ruins (J. Doyle OEH)
Right: Pigface found along the Billabong walk (J. Doyle OEH)
Bottom: Sand goanna (J. Doyle OEH)

BUSH WALKS

The Old Kinchega Homestead RUINS WALK

Grade: 3
Distance: 300m
Time: 10-15 minutes

The Old Kinchega Homestead BILLABONG WALK

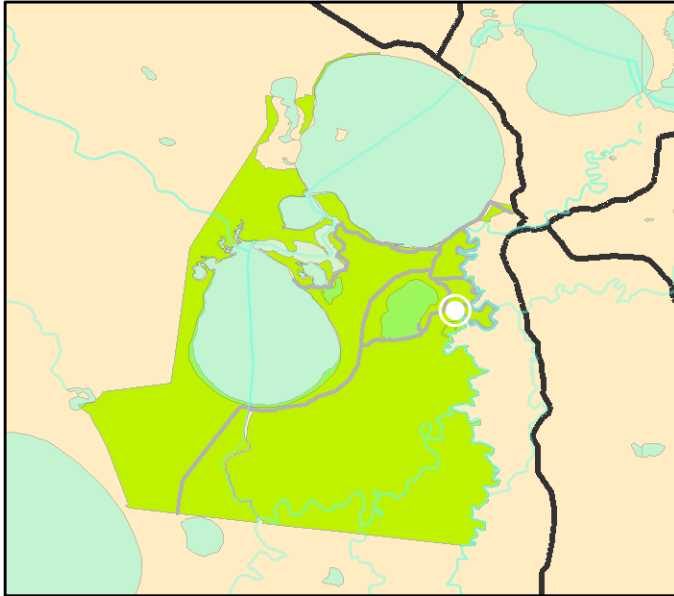
Grade: 3
Distance: 2.3km
Time: 1.5 – 2 hours










For more information about Kinchega National Park please contact:
183 ARGENT STREET
BROKEN HILL NSW 2880

T: 08 8080 3200
F: 08 8080 3201
E: npws.westdarling@environment.nsw.gov.au

Kinchega National Park

Old Kinchega Homestead: Ruins and Billabong Walks



-  Main Road
-  NPWS road
-  Billabong Walk
-  Ruins Walk
-  National Park
-  Water Course
-  Toilet
-  Parking
-  Camping Area

