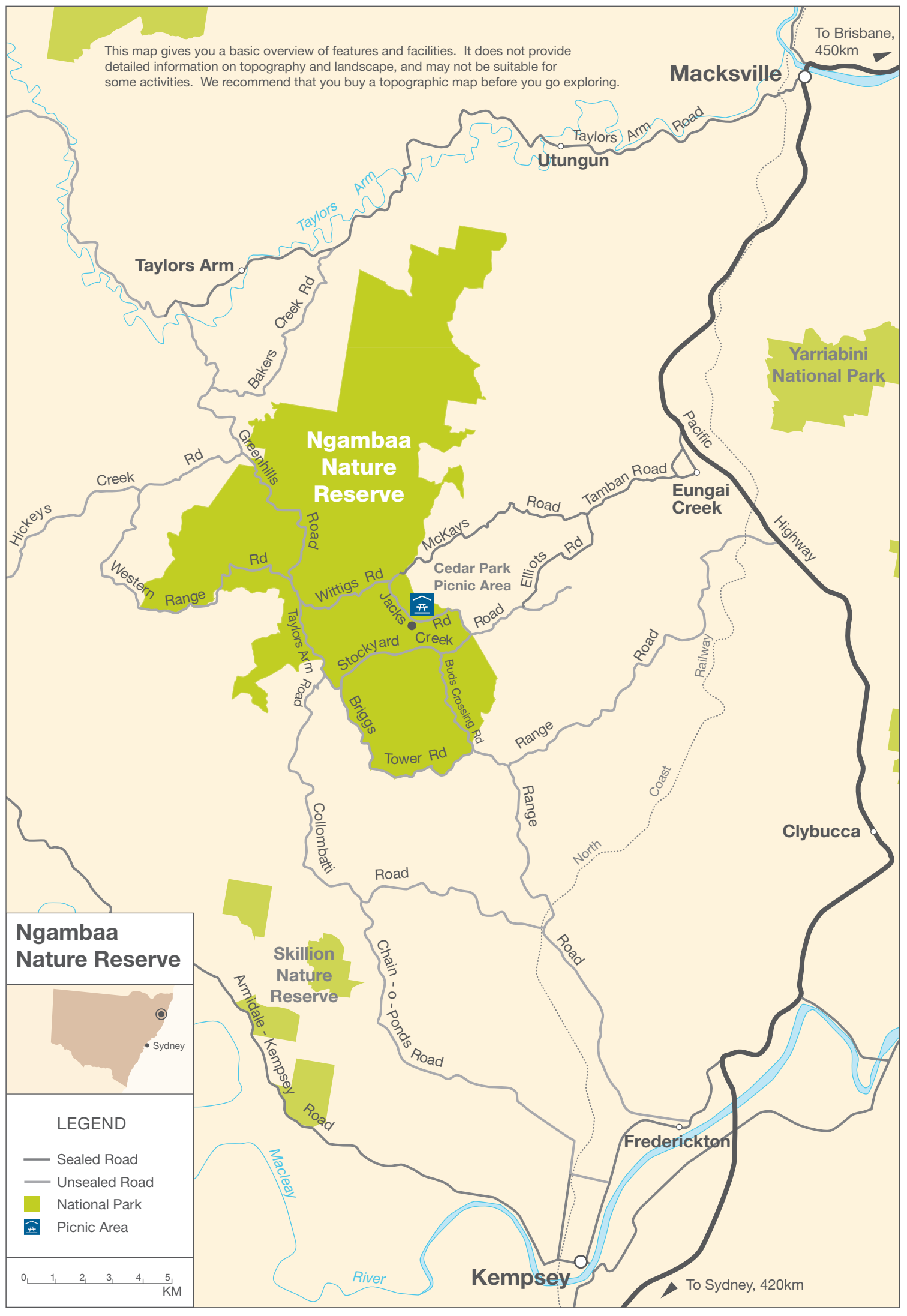


This map gives you a basic overview of features and facilities. It does not provide detailed information on topography and landscape, and may not be suitable for some activities. We recommend that you buy a topographic map before you go exploring.



To Brisbane, 450km

**Macksville**

**Utungun**

**Taylors Arm**

**Ngambaa Nature Reserve**

**Yarriabini National Park**

**Eungai Creek**

**Cedar Park Picnic Area**

**Clybucca**

**Frederickton**

**Kempsey**

To Sydney, 420km

**Ngambaa Nature Reserve**



**LEGEND**

- Sealed Road
- Unsealed Road
- National Park
- Picnic Area

