

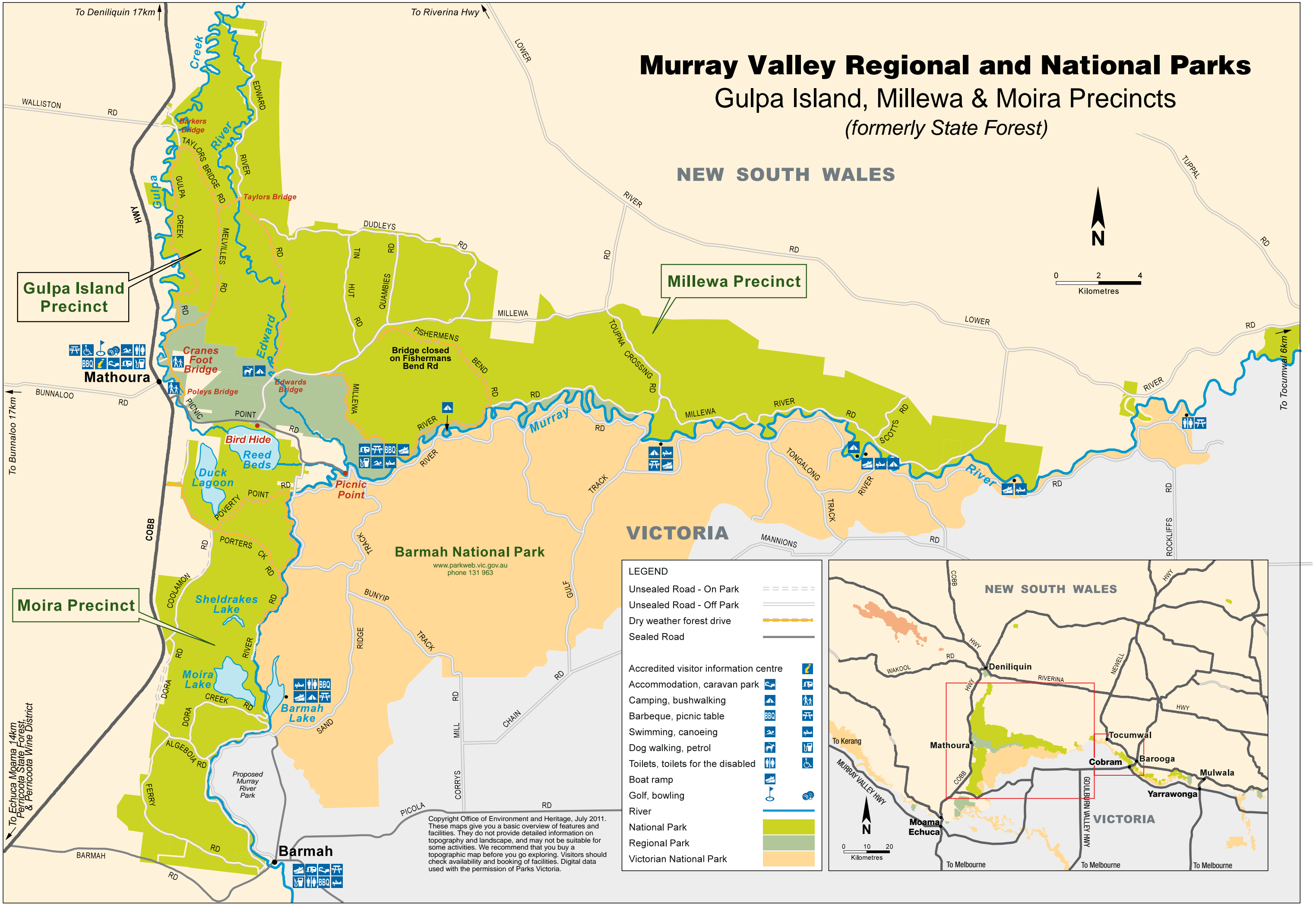
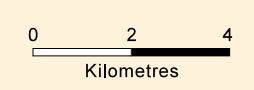
Murray Valley Regional and National Parks

Gulpa Island, Millewa & Moira Precincts

(formerly State Forest)

NEW SOUTH WALES

VICTORIA



Gulpa Island Precinct

Millewa Precinct

Moira Precinct

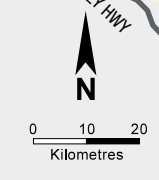
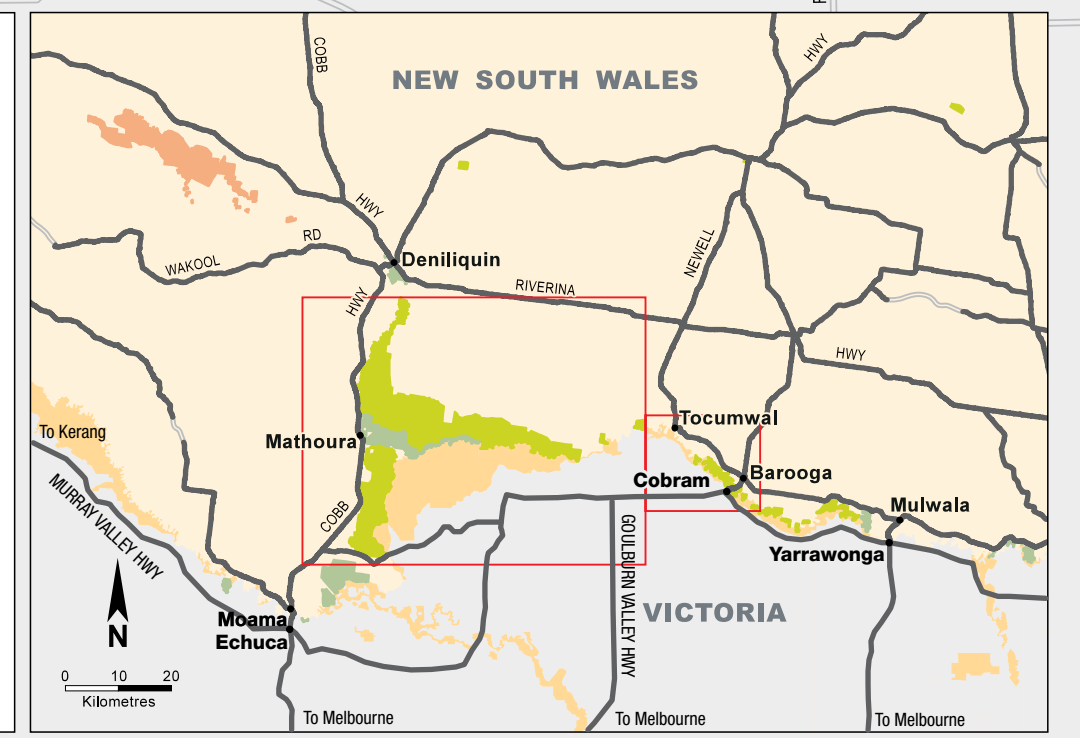
Barmah National Park

www.parkweb.vic.gov.au
phone 131 963

LEGEND

Unsealed Road - On Park	----
Unsealed Road - Off Park	---
Dry weather forest drive	— — — — —
Sealed Road	————
Accredited visitor information centre	
Accommodation, caravan park	
Camping, bushwalking	
Barbeque, picnic table	
Swimming, canoeing	
Dog walking, petrol	
Toilets, toilets for the disabled	
Boat ramp	
Golf, bowling	
River	
National Park	
Regional Park	
Victorian National Park	

Copyright Office of Environment and Heritage, July 2011.
These maps give you a basic overview of features and facilities. They do not provide detailed information on topography and landscape, and may not be suitable for some activities. We recommend that you buy a topographic map before you go exploring. Visitors should check availability and booking of facilities. Digital data used with the permission of Parks Victoria.



To Deniliquin 17km ↑

To Riverina Hwy ↑

To Bunnaloo 17km ↓

To Echuca Mqama 14km ↓
Perricoota State Forest & Perricoota Wine District

To Tocumwal 6km ↓