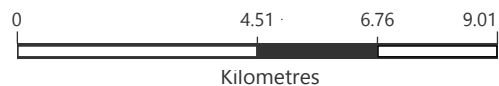
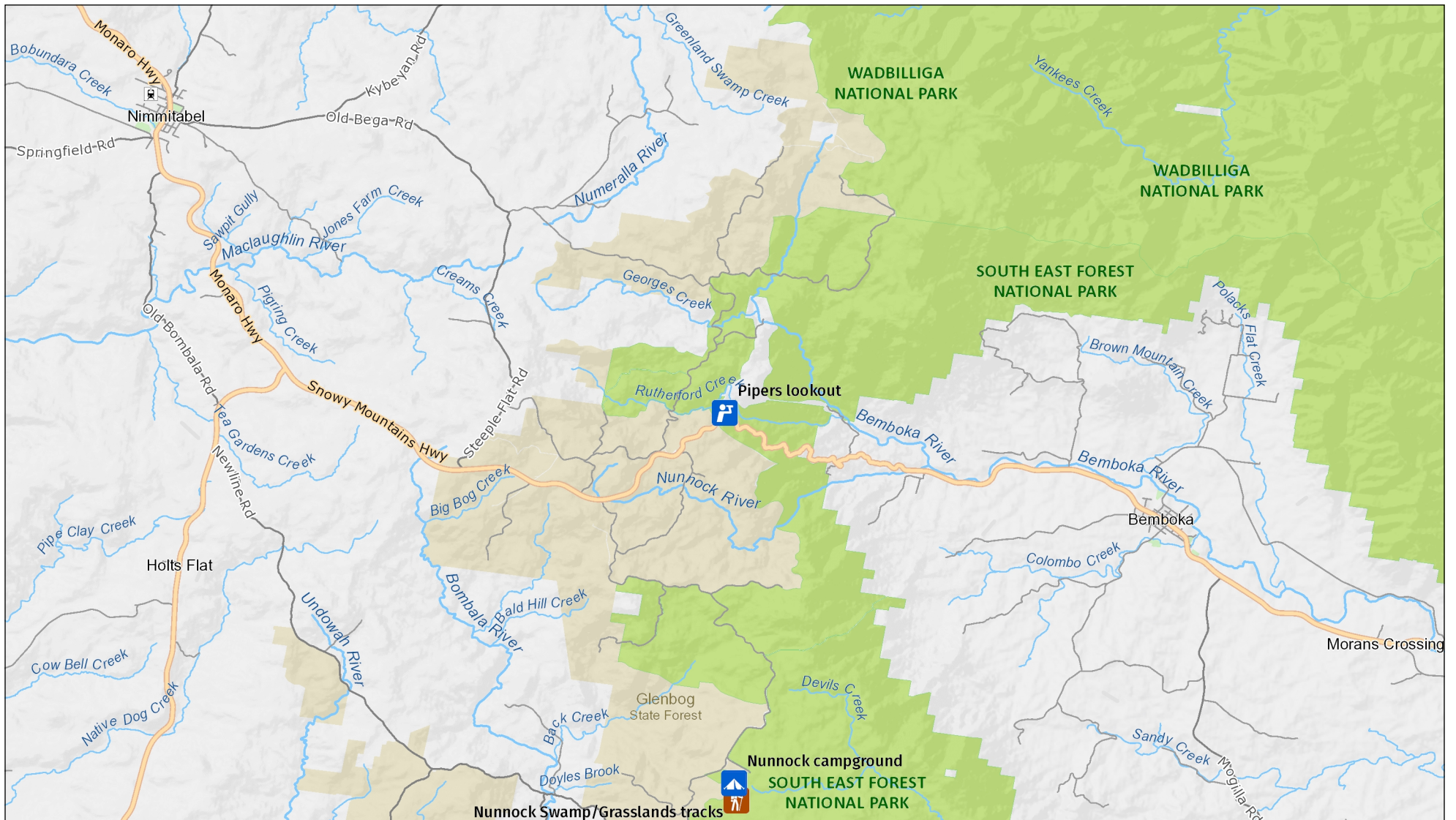




Pipers lookout

Overview map



MAP INFORMATION

This map does not provide detailed information on topography, alerts or opening times and may not be suitable for some activities.

Map Published: 08-Feb-2022



 Feature Park/section	 Other NPWS reserve	 Mount/Peak/Hill	 Waterfall
 Track	 Management trail (no motor vehicle access)	 Motorway	 Primary road
 Arterial road	 Sub-arterial road	 Distributor road	 Local road
 Sealed road	 Unsealed road	 Feature route	 Railway
 Watercourse	 Waterbody	 Marine Park/ Aquatic Reserve	 Firearms range/ Danger area
Attractions and activities		Facilities	Transport
 Aboriginal site	 Adventure sports location	 Accommodation	 Train station
 Birdwatching spot	 Boating location	 Boat ramp	 Bus station
 Campground	 Canoe/Kayak location	 Café/kiosk	 Ferry wharf
 Cave entrance	 Fishing spot	 Education centre	 Airport
 Historic site	 Lookout	 Picnic area	Warnings
 Snow sports facility	 Surfing spot	 Venue	
 Swimming spot	 Visitor centre		
 Canoe/Kayak route	 Car touring route		 Warning
 Cycling trail	 Horse riding trail		
 Snow trail	 Walking track		
 4WD touring route			



Explore the NSW

National Parks app

Download your next adventure

Get GPS-enabled maps and information on over 225 national parks in the NSW National Parks app. Download a park to navigate its map without an internet connection.

nswparks.info/app

Photo: Mount Kaputar National Park (Simone Cottrell/DFP)

GET IT ON Google Play

Download on the App Store